



# PEINEMANN

EQUIPMENT



COMPACTCRANE  
BROCHURE

# PEINEMANN COMPACTCRANE



## COMPACTCRANE

### WORKING SAFELY IN INDUSTRIAL MAINTENANCE

*Are you working in an environment with explosive substances where you need to lift heavy loads? Operating the Compactcrane, allows users to save much time and reduce the risks of accidents or damage. This compact heavyweight was especially designed for operations in environments with dangerous substances.*

#### ATEX-compliant design

The compactcrane was designed for operations in areas exposed to explosion hazards. Equipped with a lithium battery pack, the crane operates for more than one day without the need of a recharge. The Compactcrane can swivel 2 x 15 degrees for accurate positioning and it comes with a pick & carry function.

#### Remote control with display

Operators can easily control the various compact crane functions with the supplied wireless remote control unit (also ATEX compliant). The display on the remote control provides you with all of the necessary information.



#### KEY FEATURES

---

Pick & carry

---

Wireless remote control

---

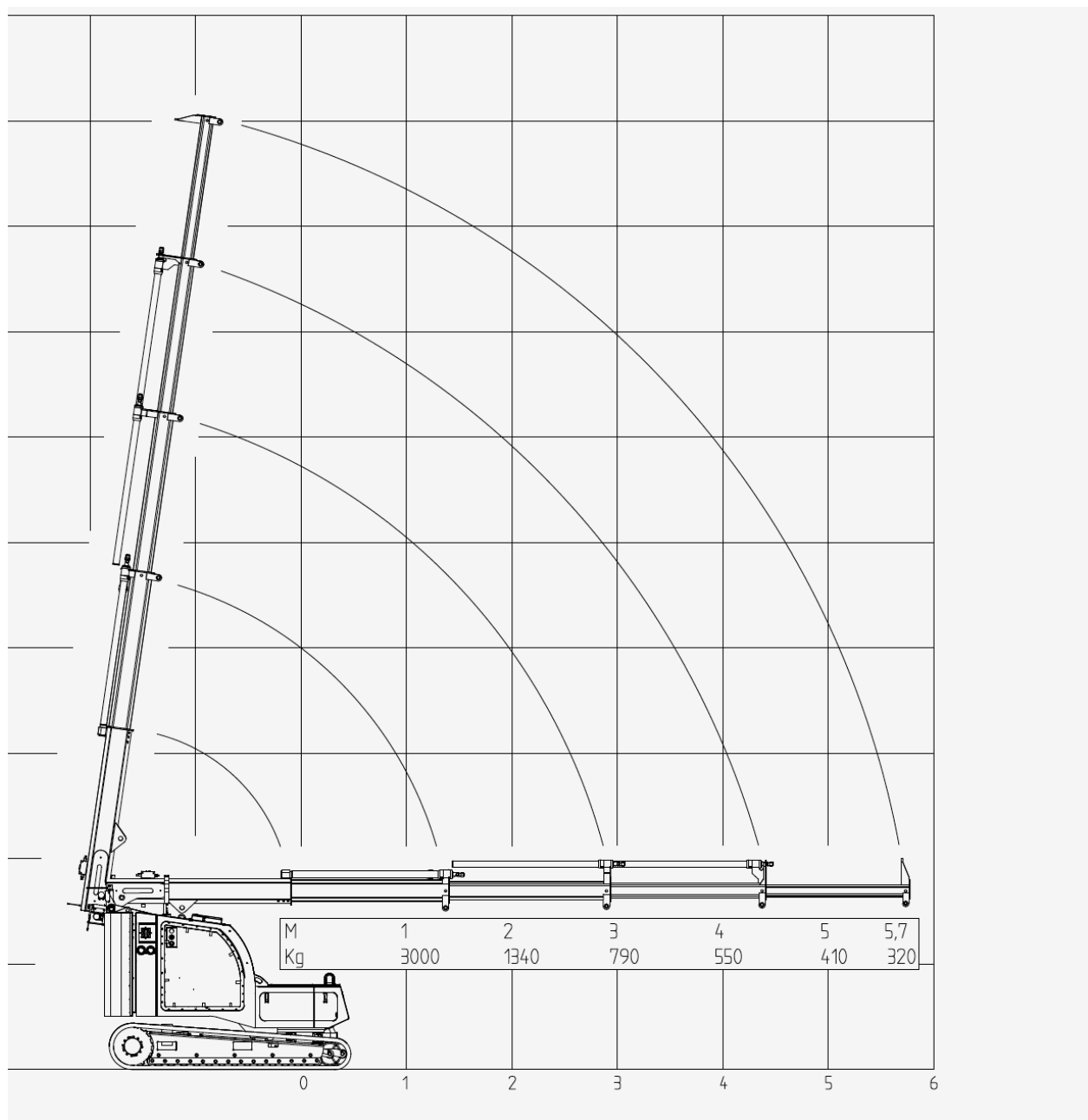
Swivel capability

---

Energy source: lithium battery pack

---





## Technical specifications (approx)

Crane's lifting torque	5 tons/meter	Charging	16A/230V
Turret range	2 x 15 degrees	Battery type	Lithium
Max. height	9m	Remote control	Wireless
Max. reach	5.7 m	PLC	IFM mobile controller
Max. lifting capacity	3000 kg	Communication	CAN-bus
Machine weight	2800 kg	Supply voltage	24 VDC
Width	100 cm	Drive motor	Hydraulic/planetary reduction
Height	180 cm	Tracks	Rubber tracks stainless-steel track rollers
Length	240 cm	Tensioning system	Grease tensioner
Pump type	Piston	Telescopic part	4x hydraulically extensions, fixed hook
Operating pressure	250 bar	Safety features	PLC-controlled load torque safety
Hydraulic valves	5- way electro hydraulic	Zone	ATEX – 3G IIB T3 (zone 2)
Battery capacity	14 kWh	Storage space	2 lockable storage compartments

## Peinemann Equipment

See also  
[www.peinemannequipment.com](http://www.peinemannequipment.com)

**Peinemann Equipment B.V.**  
 Mandenmakerstraat 190  
 3194 DA Hoogvliet  
 Phone: +31(0)10 - 295 50 00  
 Fax: +31(0)10 - 295 50 59

**Peinemann USA**  
 22820 I-H 45 N., Bldg #7, Ste P  
 Spring, TX 77373  
 Phone: 281-288-7979  
 Fax: 866-431-5140

E-mail: [info@peinemann.nl](mailto:info@peinemann.nl)  
 Website: [www.peinemannequipment.com](http://www.peinemannequipment.com)