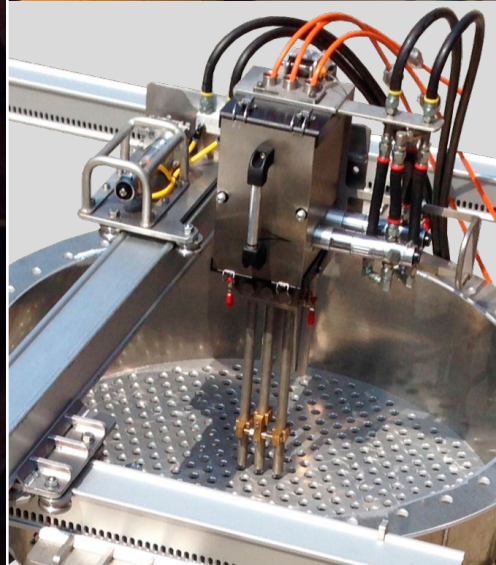
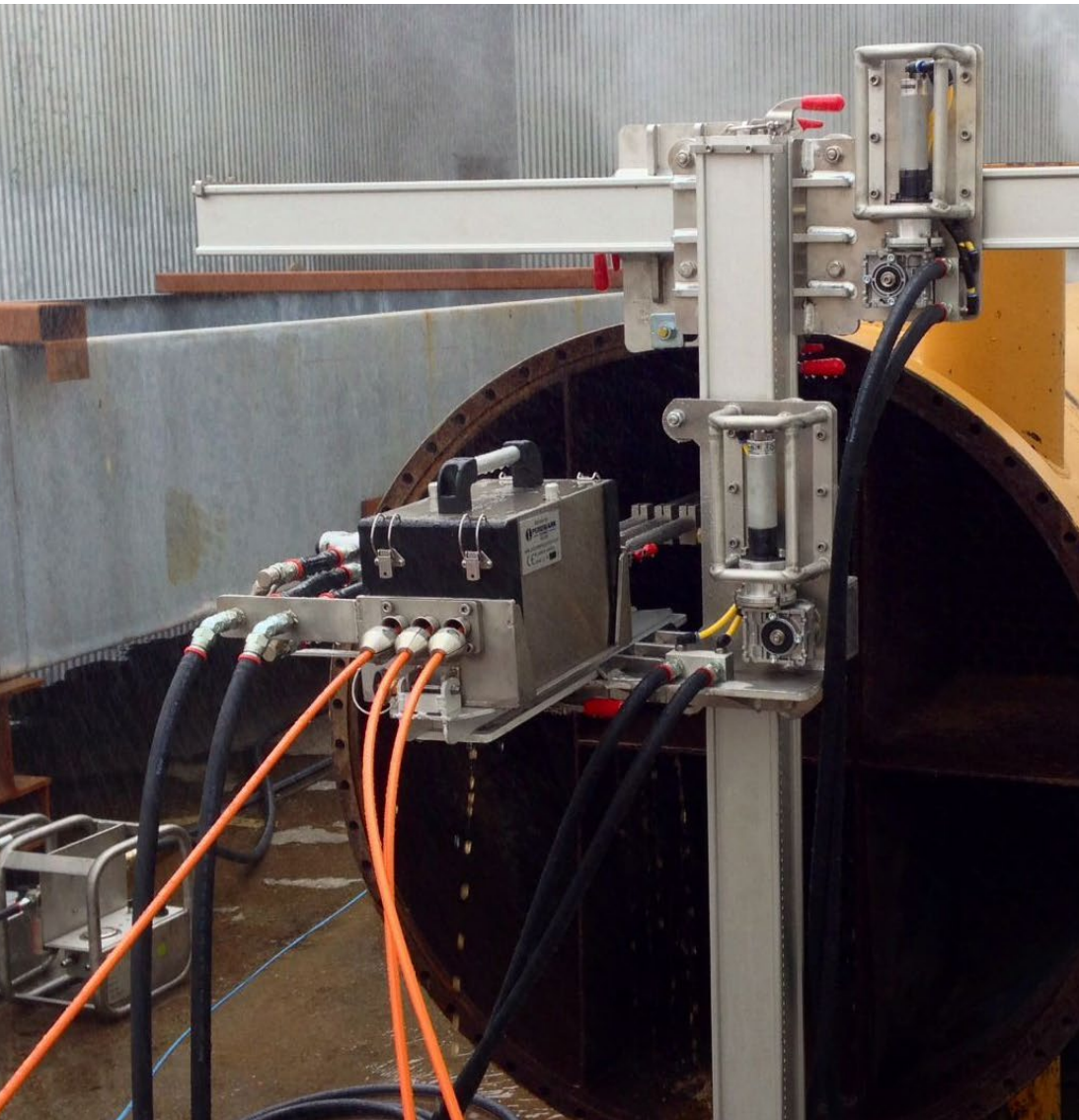




PEINEMANN

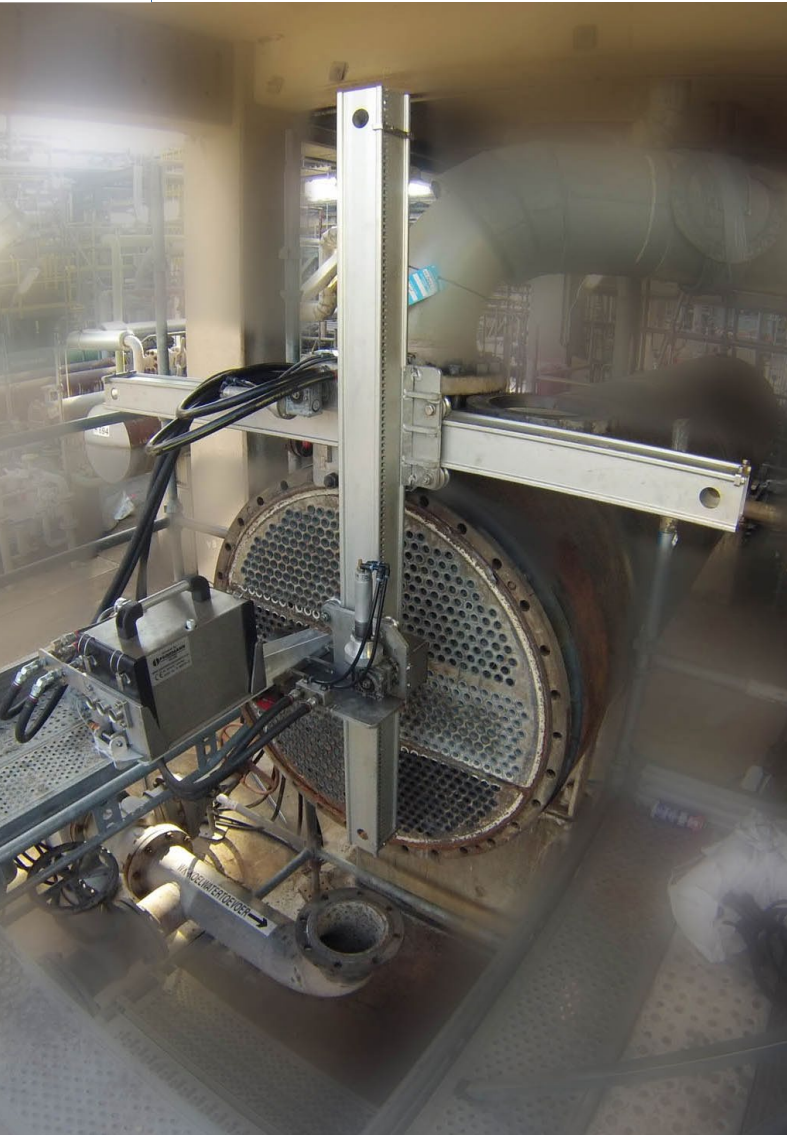
EQUIPMENT



3XLTC

3XLTC Flexframe

- A light weight and safe set up that will allow for cleaning bundles at difficult to reach locations with ease. The Flex Frame set up is very portable which is easily mounted on the flange of the bundles.
- Here too the clamp plate will allow for different models of machines making it extremely versatile.
- The same remote can be used for all movements of the Flex Frame and 3XLTC.



Triple Lance Tube Cleaner

Portable, affordable, safe and easy to assemble are just some of the main characteristics of the new tube cleaning equipment: The PEINEMANN Tripel Lance Tube Cleaner. Made from high quality materials we managed to manufacture equipment that will have improved cleaning capabilities at a relatively small investment.

The added benefit is that the whole structure is portable, modular, easy to dismantle and it can be used in conjunction with a medium size High Pressure pump. The remote control will increase safety as the operator will be operating the tube cleaning equipment from a safe working distance.

3XLTC with Flexframe on fin fan coolers

- Due to the limited space available at airfin banks it was essential to limit the overall length of the machine.
- By using only the outer two hoses of the possible three you create an ideal pitch for fin fan banks.



Advantages

Safe

The Triple Lance Cleaners are controlled via remote control keeping the operator away from the danger. Hose catchers that are fitted to the equipment preventing the hose from coming out of the machine. At the other end of the flex hose you can fit a stopper which limits the length of hose to be fed down the tubes.

3XLTC on standard XY-frame

- Is a standard set up consisting of a light weight but yet a strong indexing frame to which the 3XLTC is mounted.
- Operated by air via a simple remote control and weighing no more than 175 kg combined.
- Easy to set up on the cleaning bay and working with three flex hoses at a time.



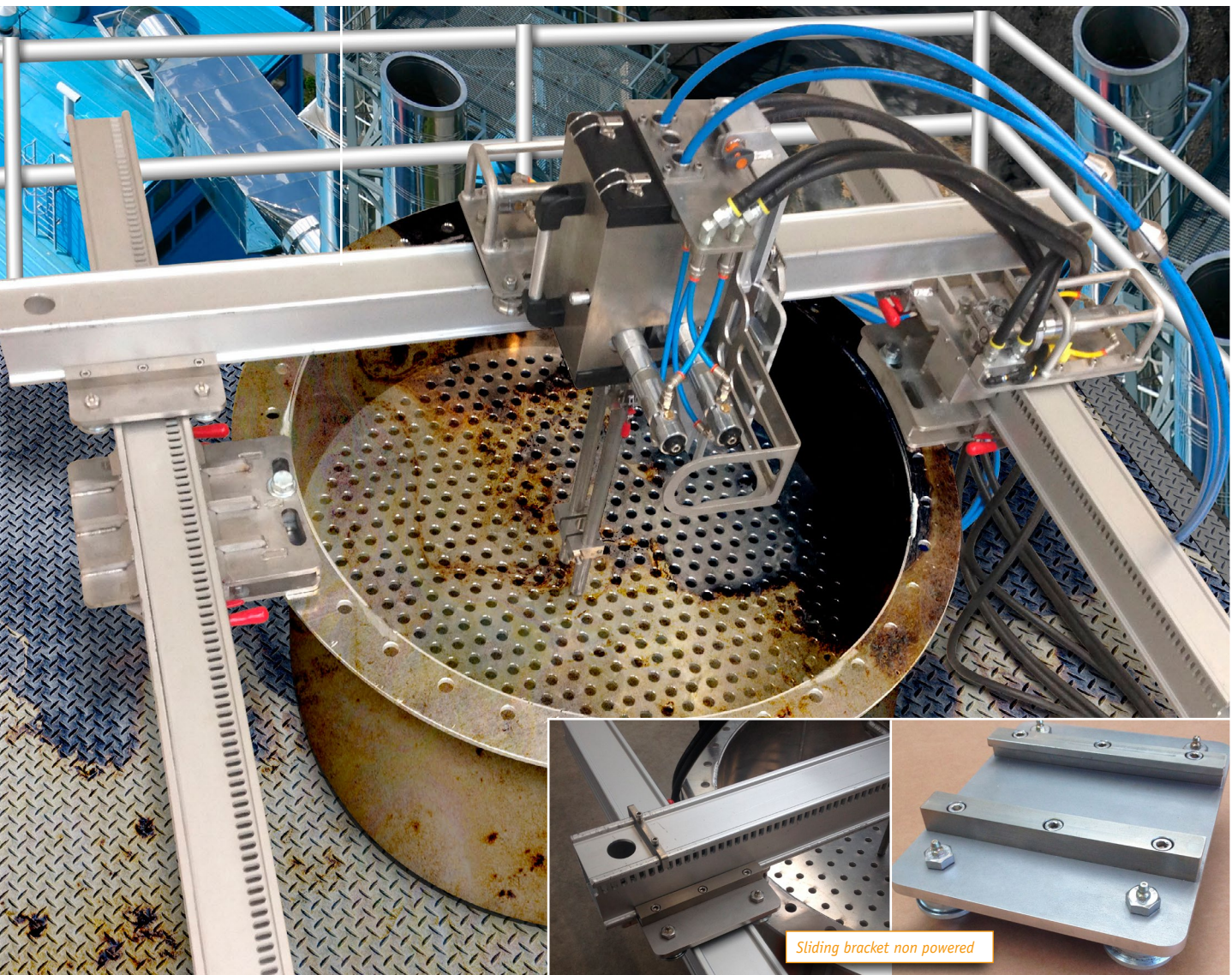
Advantages

Versatile

The Peinemann Triple Lance Cleaners have the capabilities of cleaning both vertical and horizontal bundles at difficult to reach locations in combination with a medium size HP pump. The whole construction is still portable and can be positioned at difficult to reach areas. Various sizes of flex lances can be used with the same standard track.

3XLTC Flexframe in vertical position

- The standard 3XLTC Flexframe can easily be positioned in a vertical position using an additional mounting bracket with box rail and a non driven cart (H-Frame set up). This H-frame set up does not require scaffolding.
- The same remote can be used for left and right movements as well as in and out movements of the flex hoses.

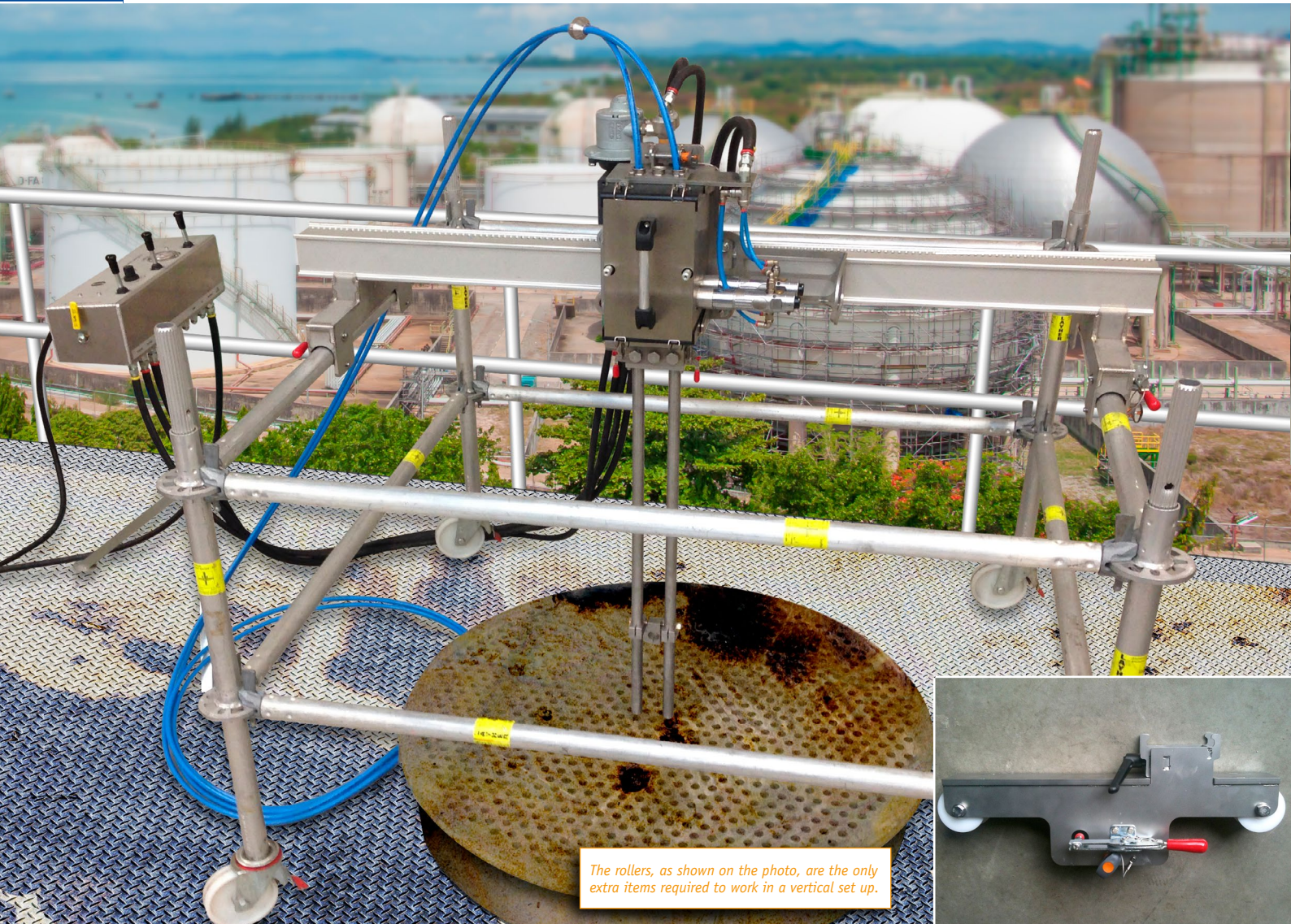


Efficient

Thanks to the power of the equipment the nozzle configuration can become more efficient and attack the contamination better. In short: "The available water is being used for cleaning".

3XLTC in vertical position with side rollers

- Ideally suitable for vertical bundles with large diameter tubes such as evaporators using side rollers for easy positioning on scaffold pipes.
- Large diameter hoses can also be used with the standard set of tracks.



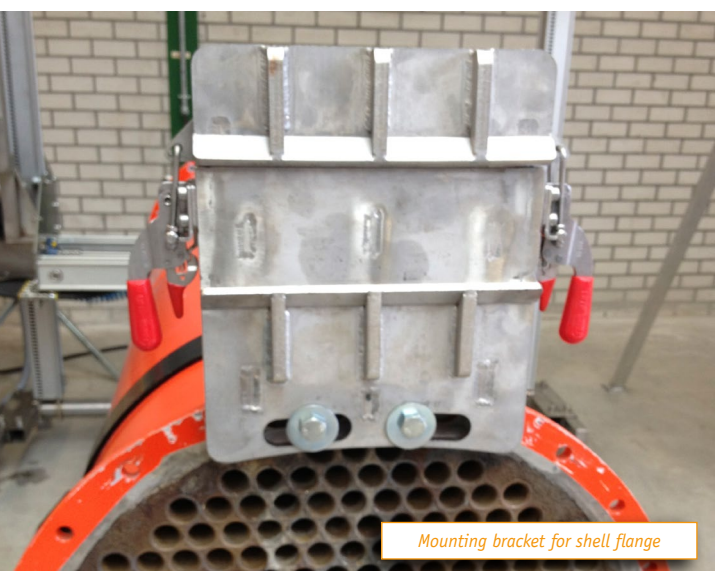
Advantages

Design

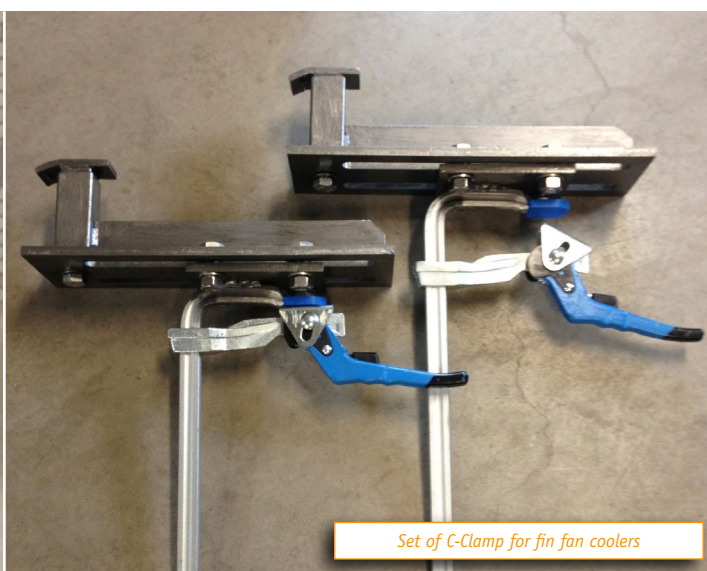
The 3 XLTC is deliberately equipped with 4 identical air motors which are proven in the field. The track of the 3 XLTC is deliberately designed to suit a multitude of hose types without having to change them.

Suitable hose sizes: (OD) 6 mm - 15 mm (.236" - .590")

Type of hose possibilities: 4/2, 5/2, 6/2, 8/2, 8/4



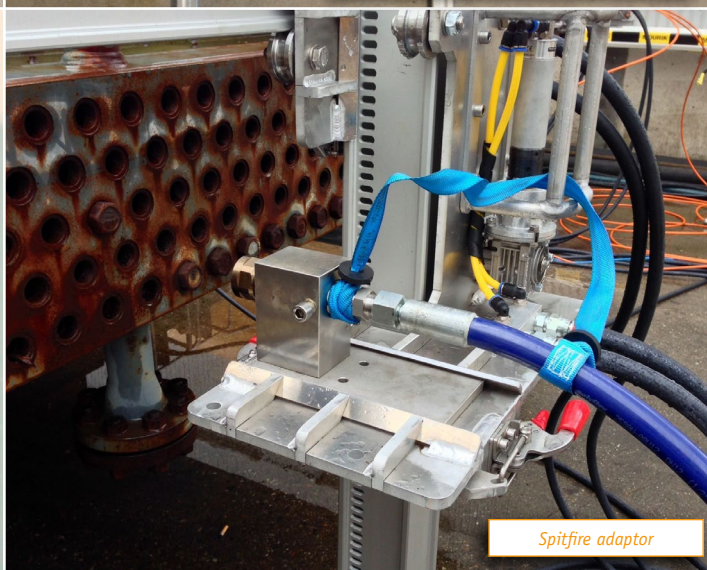
Mounting bracket for shell flange



Set of C-Clamp for fin fan coolers



Mounting clamp for tube sheet



Spitfire adaptor

Modular

Be it a standard 3XLT with indexing frame or a vertical set up, nearly every configuration is possible with our latest 3XLT range of products. The 3XLT with the numerous possible configurations give tremendous flexibility at often difficult to reach locations. A single investment gives you multiple cleaning solutions. A modular system will benefit from a short set up time.

Triple Lance Tube Cleaner

Technical specifications (approx)	3XLTC
Hose Size (OD)	6 mm- 15 mm (.236" - .590")
Type of hose possibility	4/2, 4/4, 5/2, 5/4, 6/2, 6/4, 8/2, 8/4
Maximum OD hose coupling	20 mm (.787")
Maximum capacity	0,74 KW (1 PK)
Minimum air pressure	3,0 Bar (45 Psi)
Maximum air pressure	6,3 Bar (95 Psi)
Air consumption	360 l/min. at max RPM (6.3 CFM)
Cleaning Speed (approx)	0.45 m-0,7 m/sec (18" - 30" per second) Adjustable with the air pressure
Recommended flow	114 ltr (30 gallon) per min. (3 x 38 ltr./3 x 10 gallon)
Recommended pressure	1400 Bar (20,000 Psi)
Maximum pressure	Suitable to work with pressures up to 3000 Bar
Max. pull/push strength (approx)	300 Newton

Peinemann Equipment

See also
www.peinemannequipment.com

Peinemann Equipment B.V.

Mandenmakerstraat 190
3194 DA Hoogvliet
Phone: +31(0)10 - 295 50 00
Fax: +31(0)10 - 295 50 59

Peinemann USA

22820 I-H 45 N., Bldg #7, Ste P
Spring, TX 77373
Phone: 281-288-7979
Fax: 866-431-5140

E-mail: info@peinemann.nl
Website: www.peinemannequipment.com

Peinemann Equipment iPhone App



Available on the
App Store