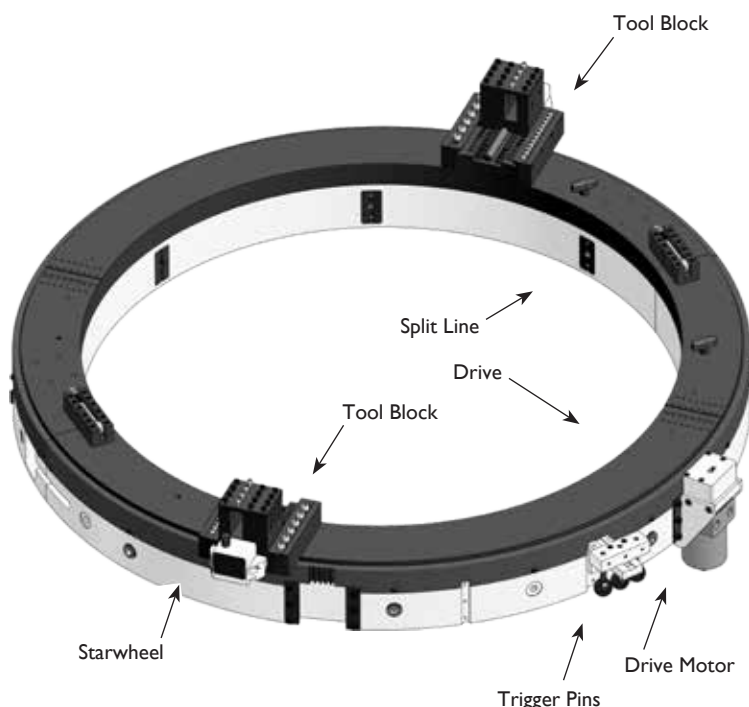


843WD Clamshell Lathe

Portable Machining Solutions



Options

- Full line of tool bits
- Right angle and reversable drives
- Single Point machining attachment
- Axial feed machining attachment
- Counter-bore / Facing attachment
- Hydraulic Power Unit

Application Range

31.00 to 43.00 inch (787 to 1092mm)
diameter pipe, or NPS 32 to NPS 42
schedule pipe

Feed

Feed Mechanism: 4 point starwheel
with 3-pin tripper feed. Feed
Rate: .002, .004 or .006 inches per
revolution (0.05, 0.11 or 0.16 mm).

Drive System- Hydraulic Drive

Air Drive

Air supply requirement: 100 cfm @100
psi (2.8 m3/min @ 6.9 bar)

Hydraulic Drive

HPU requirement: 10-15 gpm @ 1000
psi (38-57 lpm @ 69 bar) continuous
pressure Hydraulic motor includes
hose whips and quick-disconnects

Weights (includes tool blocks and drive motor)

Operating Weights

843WD Air Drive: 695 lbs. (315 kg)

843WD Hydraulic Drive: 707 lbs. (321
kg)

Shipping Weights

843WD Air Drive: 1100 lbs. (499 kg)

843WD Hydraulic Drive: 1112 lbs. (504
kg)

Features

- Sever or simultaneous Sever / Bevel 31 to 43 inch diameter pipe, or NPS 32 to NPS 42 schedule pipe
- Cold cutting in hazardous environments
- Exceptionally rigid, split frame for precise on-site machining
- Lightweight, low clearance design for easy handling in tight working spaces
- Tool holder accepts standard 3/4 or 1 inch square tool bits
- Air Caddy (air filter and oiler) included with air drive systems
- Customw setups and drives available for your application

Mactech Europe Limited

Tel: + 44 (0) 1260 253846
Web: www.mactech europe.co.uk
Email: info@mactech europe.co.uk

UK Head Office: Unit 7 Scragg House | Langley | Macclesfield | Cheshire | SK11 0DG
Aberdeen Office: Mactech House | Howe Moss Drive | Dyce | Aberdeen | AB21 0GL



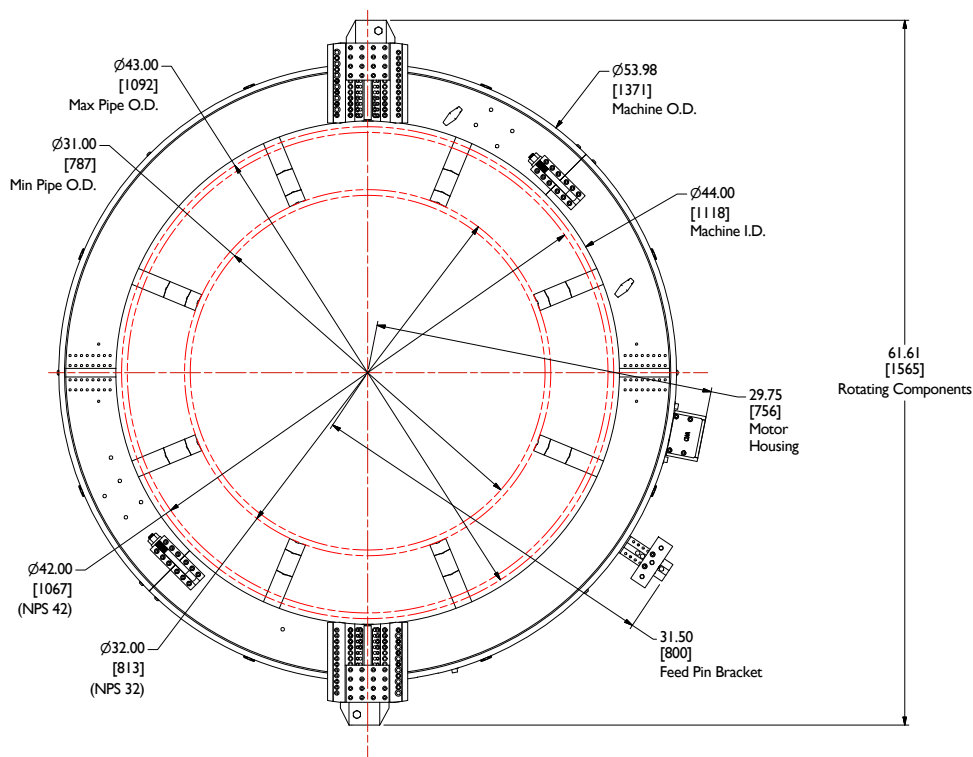
Rental Units
in the UK &
Internationally

Mactech Europe

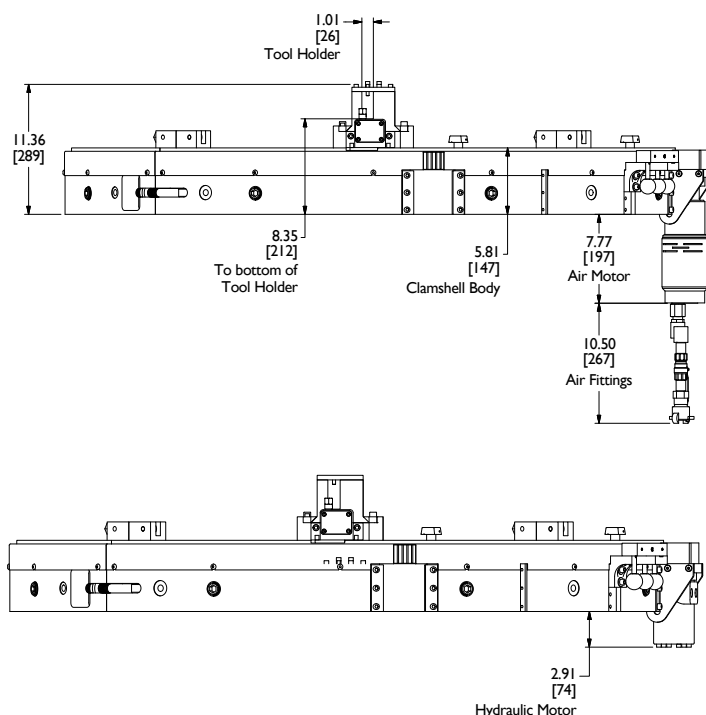
843WD Clamshell Lathe



Mactech Europe 843WD Clamshell Lathe



843WD Nominal Pipe Size (NPS) Application Range



Nominal Pipe Size (in.)	Schedule No.	Wall Thickness (in.)	Inside Diameter (in.)
32 (32.000)	10	0.312	31.376
	ST	0.375	31.250
	20	0.500	31.000
	30	0.625	30.750
	40	0.688	30.624
34 (34.000)	10	0.312	33.376
	ST	0.375	33.250
	20	0.500	33.000
	30	0.625	32.750
	40	0.688	32.624

Nominal Pipe Size (in.)	Schedule No.	Wall Thickness (in.)	Inside Diameter (in.)
36 (36.000)	10	0.312	35.375
	ST, 40S	0.375	35.250
	XS, 80S	0.500	35.000
	40	0.750	40.500
42 (42.000)	ST, 40S	0.375	41.250
	XS, 80S	0.500	41.000
	30	0.625	40.750
	40	0.750	40.500

Mactech Europe Limited

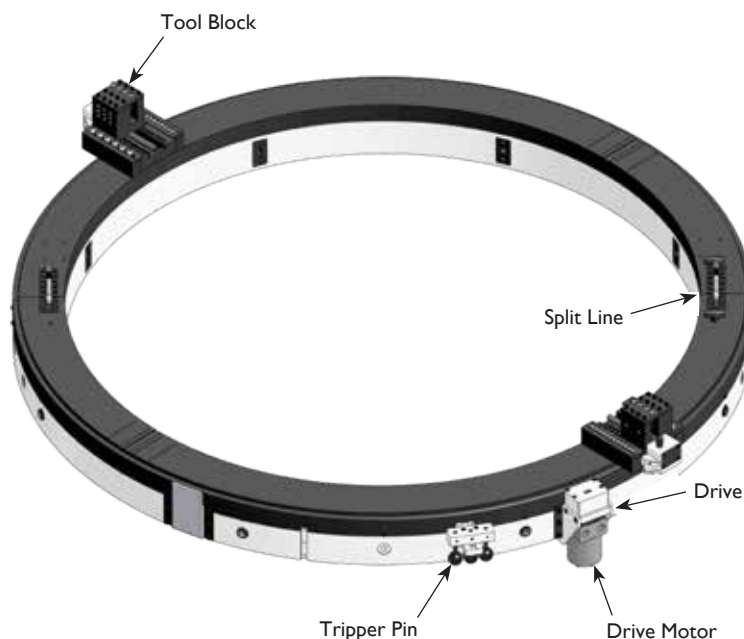
Tel: + 44 (0) 1260 253846
Web: www.mactech europe.co.uk
Email: info@mactech europe.co.uk

UK Head Office: Unit 7 Scragg House | Langley | Macclesfield | Cheshire | SK11 0DG
Aberdeen Office: Mactech House | Howe Moss Drive | Dyce | Aberdeen | AB21 0GL



860WD Clamshell Lathe

Portable Machining Solutions



Options

- Full line of tool bits
- Right angle and reversable drives
- Single Point machining attachment
- Axial feed machining attachment
- Counter-bore / Facing attachment
- Hydraulic Power Unit

Application Range

48 to 60 inch (1219 to 1524mm)
diameter pipe, or NPS 48 to NPS 60
schedule pipe

Feed

Feed Mechanism: 4 point starwheel
with 3-pin tripper feed. Feed
Rate: .002, .004 or .006 inches per
revolution (0.05, 0.11 or 0.16 mm).

Drive System- Hydraulic Drive

Air Drive

Air supply requirement: 100 cfm @100
psi (2.8 m3/min @ 6.9 bar)

Hydraulic Drive

HPU requirement: 10-15 gpm @ 1000
psi (38-57 lpm @ 69 bar) continuous
pressure Hydraulic motor includes
hose whips and quick-disconnects

Weights (includes tool blocks and drive
motor)

Operating Weights

860WD Air Drive: 917 lbs. (440 kg)

860WD Hydraulic Drive: 984 lbs. (446
kg)

Shipping Weights

860WD Air Drive: 1350 lbs. (612 kg)

860WD Hydraulic Drive: 1362 lbs.
(618 kg)

Features

- Sever or simultaneous Sever / Bevel 48 to 60 inch diameter pipe, or NPS 48 to NPS 60 schedule pipe
- Cold cutting in hazardous environments
- Exceptionally rigid, split frame for precise on-site machining
- Lightweight, low clearance design for easy handling in tight working spaces
- Tool holder accepts standard 3/4 or 1 inch square tool bits
- Air Caddy (air filter and oiler) included with air drive systems
- Custom setups and drives available for your application

Mactech Europe Limited

Tel: + 44 (0) 1260 253846
Web: www.mactech europe.co.uk
Email: info@mactech europe.co.uk

UK Head Office: Unit 7 Scragg House | Langley | Macclesfield | Cheshire | SK11 0DG
Aberdeen Office: Mactech House | Howe Moss Drive | Dyce | Aberdeen | AB21 0GL



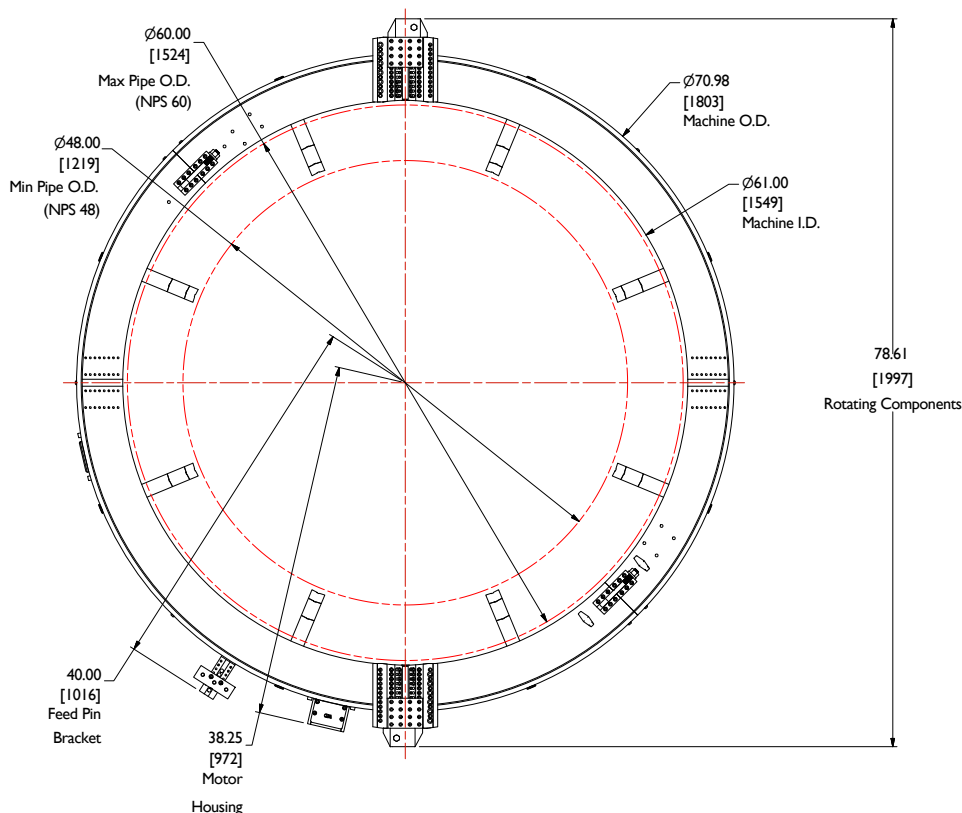
Rental Units
in the UK &
Internationally

Mactech Europe

860WD Clamshell Lathe



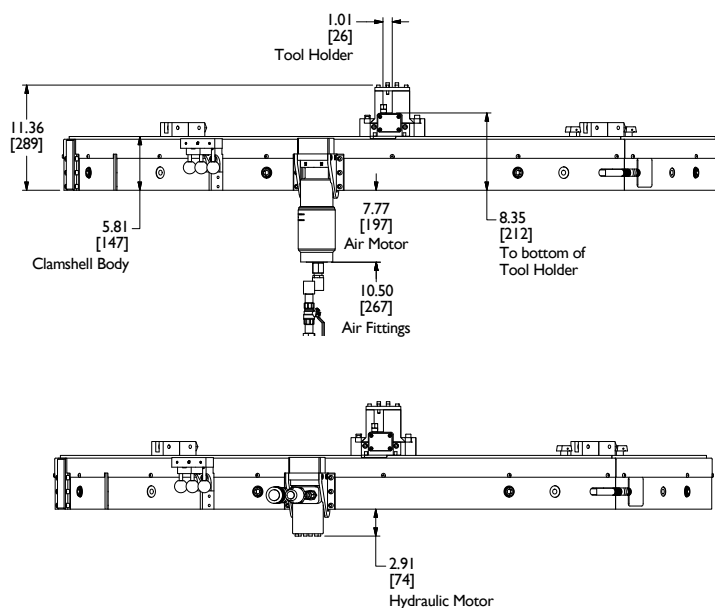
Mactech Europe 860WD Clamshell Lathe



860WD Nominal Pipe Size (NPS) Application Range

Nominal Pipe Size (in.)	Schedule No.	Wall Thickness (in.)	Inside Diameter (in.)
48 (48.000)	ST, 40S XS, 80S	0.375 0.500	47.250 47.000
54 (54.000)	ST XH	0.375 0.500	53.250 53.000

Nominal Pipe Size (in.)	Schedule No.	Wall Thickness (in.)	Inside Diameter (in.)
60 (60.000)	40S, ST 80S, XH	0.375 0.500	59.250 59.000



Mactech Europe Limited

Tel: + 44 (0) 1260 253846
Web: www.mactech europe.co.uk
Email: info@mactech europe.co.uk

UK Head Office: Unit 7 Scragg House | Langley | Macclesfield | Cheshire | SK11 0DG
Aberdeen Office: Mactech House | Howe Moss Drive | Dyce | Aberdeen | AB21 0GL



880SD Clamshell Lathe

Portable Machining Solutions



Application Range

60.00 to 80.00 inch diameter pipe (1524 to 2032 mm)

Feed

Feed Mechanism: 4 point starwheel with 3-pin tripper feed.

Feed Rate: .002, .004 or .006 inches per revolution (0.05, 0.11 or 0.16 mm).

Drive System- Hydraulic Drive

HPU requirement: 10-15 gpm @ 1000 psi (38-57 lpm @ 69 bar) continuous pressure. Hydraulic motor includes hose whips and quick-disconnects.

Weights (includes tool blocks and drive motors)

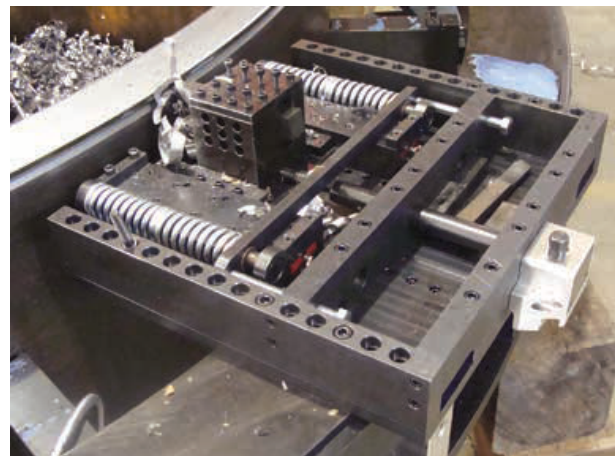
Operating Weight: 2716 lbs. (1232 kg)

Options

- Full line of tool bits
- Hydraulic Power Unit



OD Following Tool Block - Cutting Out-of-Round Pipe



Features

- Sever or simultaneous Sever / Bevel 60 to 80 inch diameter pipe
- Cold cutting in hazardous environments
- Exceptionally rigid, split frame for precise on-site machining
- OD Following Tool Block allows a +/- inch out of round workpiece
- Tool holder accepts standard 1 inch square tool bits
- Powerful dual hydraulic drives suitable for cutting toughest steel and steel alloys
- Customer setups and drives available for your application



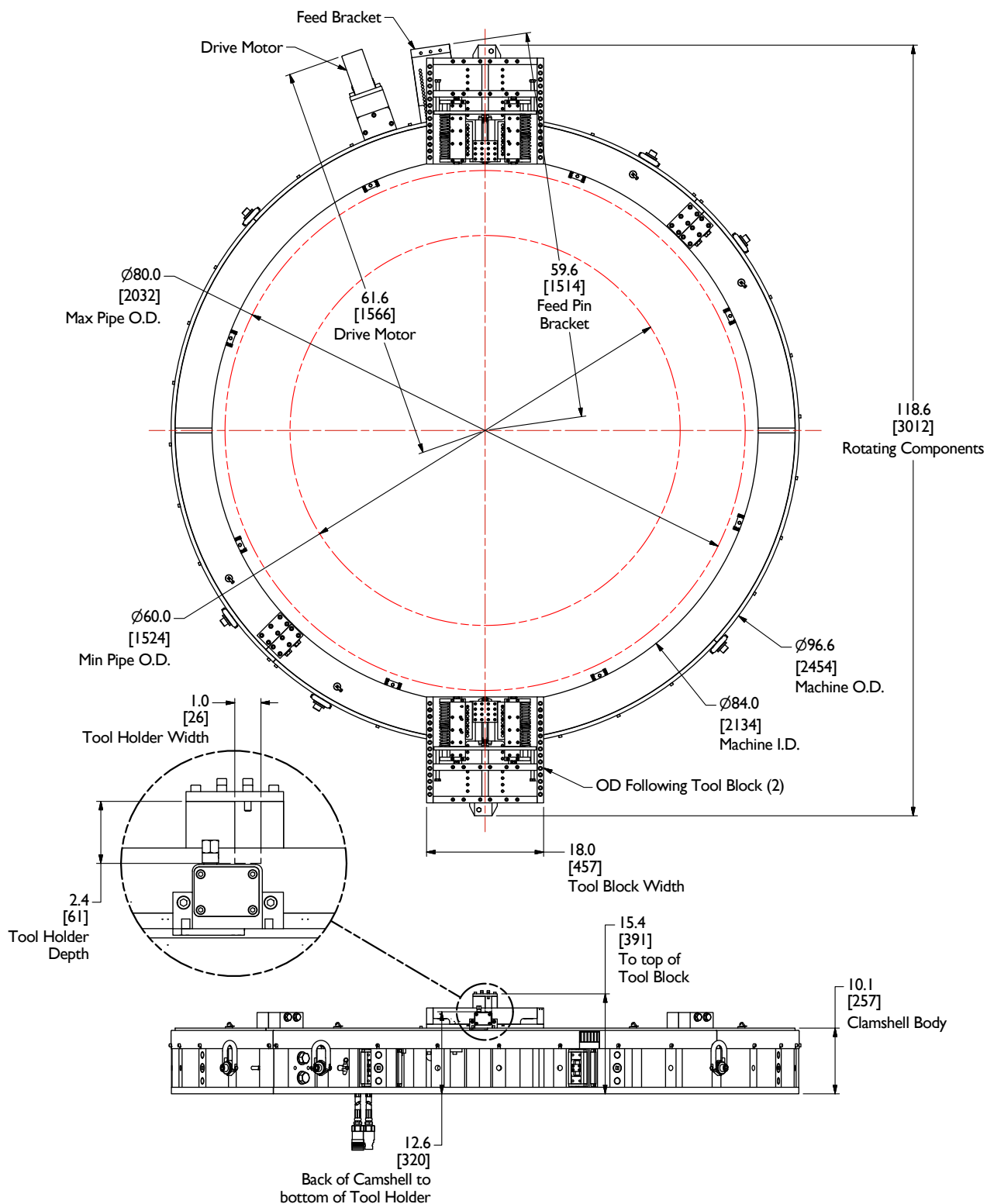
Rental Units
in the UK &
Internationally

Mactech Europe

880SD Clamshell Lathe



Mactech Europe 880SD Clamshell Lathe



Mactech Europe Limited

Tel: + 44 (0) 1260 253846
Web: www.mactech europe.co.uk
Email: info@mactech europe.co.uk

UK Head Office: Unit 7 Scragg House | Langley | Macclesfield | Cheshire | SK11 0DG
Aberdeen Office: Mactech House | Howe Moss Drive | Dyce | Aberdeen | AB21 0GL



Mactech
(EUROPE) LIMITED

8110SD Clamshell Lathe

Portable Machining Solutions



Application Range

90.00 to 110.00 inch diameter pipe (2286 to 2794 mm)

Feed

Feed Mechanism: 4 point starwheel with 3-pin tripper feed.

Feed Rate: .002, .004 or .006 inches per revolution (0.05, 0.11 or 0.16 mm).

Drive System- Hydraulic Drive

HPU requirement: 10-15 gpm @ 1000 psi (38-57 lpm @ 69 bar) continuous pressure. Hydraulic motor includes hose whips and quick-disconnects.

Weights (includes tool blocks and drive motors)

Operating Weight: 3510 lbs. (1592 kg) Shipping Weight: 4800 lbs. (2177 kg)

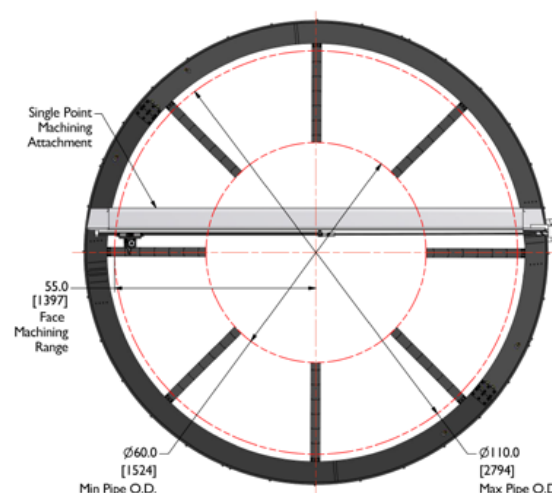
Options

- Full line of tool bits
- Single Point flange face machining attachment
- Hydraulic Power Unit



Features

- Sever or simultaneous Sever / Bevel 90 to 110 inch diameter pipe
- Cold cutting in hazardous environments
- Exceptionally rigid, split frame for precise on-site machining
- OD Following Tool Block allows a +/- inch out of round workpiece
- Tool holder accepts standard 1 inch square tool bits
- Powerful dual hydraulic drives suitable for cutting toughest steel and steel alloys
- Single point attachment available for flange face machining
- Customer setups and drives available for your application



Single Point Machining Attachment

Mactech Europe Limited

Tel: + 44 (0) 1260 253846
Web: www.mactech europe.co.uk
Email: info@mactech europe.co.uk

UK Head Office: Unit 7 Scragg House | Langley | Macclesfield | Cheshire | SK11 0DG
Aberdeen Office: Mactech House | Howe Moss Drive | Dyce | Aberdeen | AB21 0GL



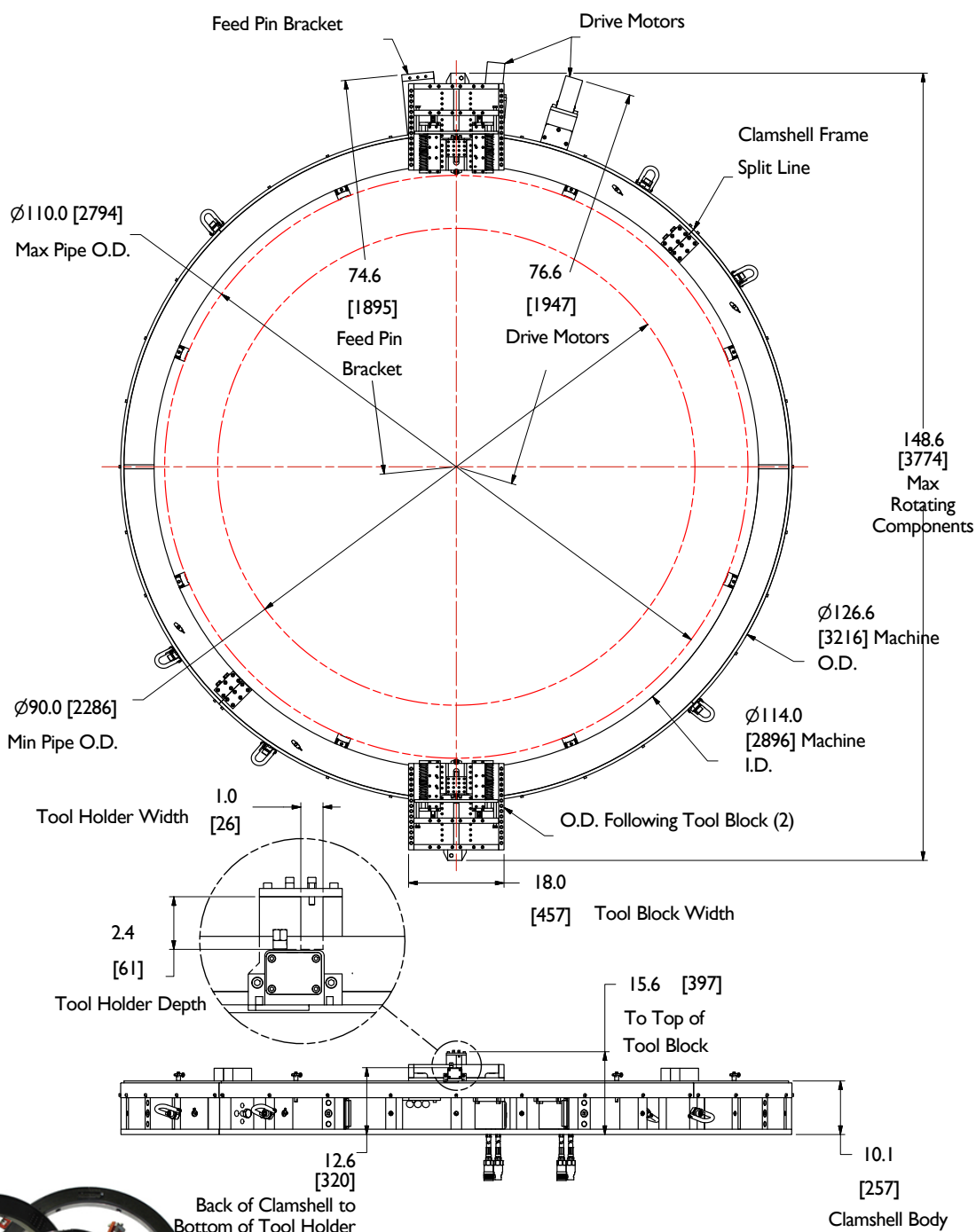
Rental Units
in the UK &
Internationally

Mactech Europe

8110SD Clamshell Lathe



Mactech Europe 8110SD Clamshell Lathe



Mactech Europe Limited

Tel: + 44 (0) 1260 253846
Web: www.mactech europe.co.uk
Email: info@mactech europe.co.uk

UK Head Office: Unit 7 Scragg House | Langley | Macclesfield | Cheshire | SK11 0DG
Aberdeen Office: Mactech House | Howe Moss Drive | Dyce | Aberdeen | AB21 0GL



Mactech
(EUROPE) LIMITED