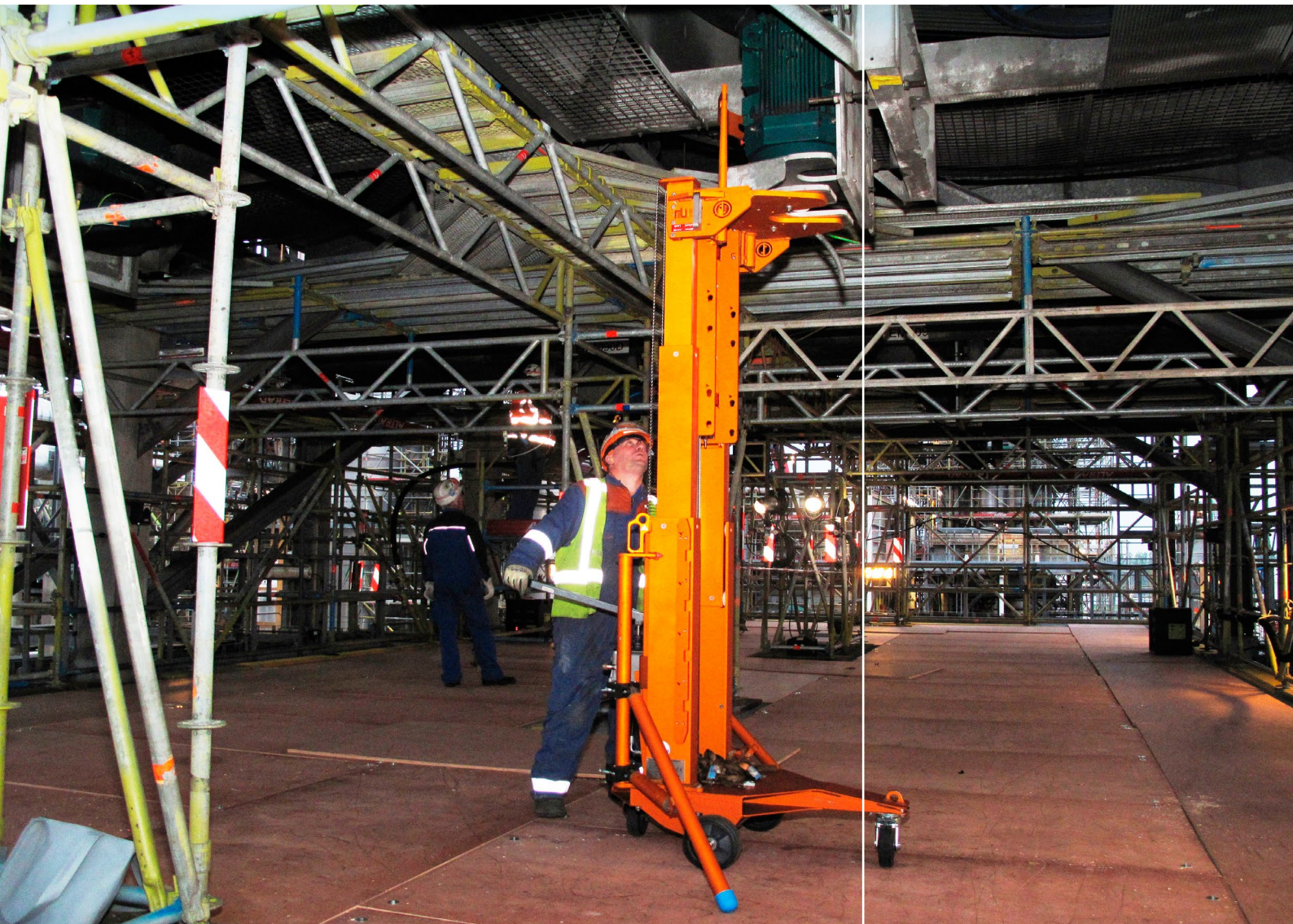




PEINEMANN

EQUIPMENT



MOTORLIFTER
BROCHURE



MOTORLIFTER

LIFTER FOR AIRFIN BANK ELECTRIC MOTORS

Until this very day, no safe method has been developed for the safe exchange of airfin bank electric motors. Peinmann Equipment however, has now developed a lifter that can indeed do this in a safe way.

Current situation

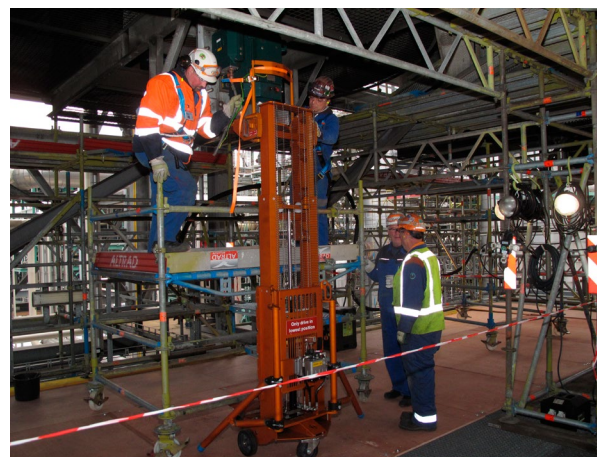
The electric motor hangs under the airfin bank, and there are practically no lifting facilities available to allow it to be exchanged safely. Because this work cannot be carried out using cranes or forklifts either, a chain hoist is usually attached to a structural part not intended for this, or to the airfin bank itself. This is very risky though, because the structure is not intended for it.

Function

The lifter that Peinmann Equipment has now developed is intended to do its work from walkway and/or working platforms. Because only a low loading may be imposed on the walkway platforms, the lifter is made of aluminium. From the walkway platform, the lifter can exchange motors up to a weight of 350kg and with a maximum height of 2.42 metres from the bottom of the motor.

Ease of use

The lifter has been primarily developed for safe working, ease of use and manoeuvrability. The lifter therefore has two castors – equipped with brake mechanism – at the front and rear and two fixed wheels in the middle. Also, the working width is very small so it can do its work on almost all walkway and work platforms.





Lifting system

The hydraulic ram that causes the lifting system to reach the desired height is controlled manually using a hydraulic pump. The lifting system can be telescoped out in three sections using steel cables, among other things. This was opted for in order to make the lifter's own weight as low as possible. The lifter features all safety facilities that are necessary to allow it to be worked with safely. These safety features include a double set of steel cables, hose failure protection, and a two-way valve, that also ensures that the lifting mechanism can be forced down.

Lifting and transport facilities

The lifter further possesses three lifting eyes for placing the machine on a walkway or working platform on site using a crane. The lifter is also provided with two forklift pockets to allow the machine to be shifted easily. The lifter has been tested and is provided with a TÜV test certificate. Once the electric motor is placed on the lifter, the lifter can only be shifted if it is in its lowest position. The lifter may not be rolled away with the electric motor on board at any other height.

Stability

With sufficient room, the lifter's stability can be increased still further using two side supports, for example on a work platform. On a walkway platform, the stability can be increased by attaching the side supports to the handrail; these may be loaded to a maximum of 100 kg. In order not to exceed the total load capacity per square metre (weight of lifter + electric motor), use may be made of plastic running boards or aluminium channels. The permitted loading per square metre for walkway and/or work platforms averages 290 to 500 kg.



MOTORLIFTER

Technical specifications (approx)

	MOTORLIFTER
Weight	145 kg / 319.76 LB
Working height	2.42 metres / 7' 11"
Lifting capacity	350 kg / 771.61 LB
Particulars	<ul style="list-style-type: none"> • The lifter is patented • There is a comprehensive manual • featuring exploded views • The lifter is CE-marked

Peinemann Equipment

See also
www.peinannequipment.com

Peinemann Equipment B.V.
 Mandenmakerstraat 190
 3194 DA Hoogvliet
 Phone: +31(0)10 - 295 50 00
 Fax: +31(0)10 - 295 50 59

Peinemann USA
 22820 I-H 45 N., Bldg #7, Ste P
 Spring, TX 77373
 Phone: 281-288-7979
 Fax: 866-431-5140

E-mail: info@peinmann.nl
 Website: www.peinannequipment.com